

# White Realty Space Available for Lease

## Commercial Space Available for Lease

White Realty is here to serve you in your search for commercial real estate. Whether it's office, retail, industrial, or flexible space, we have it. See *some* of our clients' space available for lease and contact us for more information.

**White Realty Associates**

3704 Kennett Pike, Suite 200

The Greenville Professional Center

Greenville, DE 19807

(302) 658-6681



### Parkway Industrial Park | 240 Lisa Drive, New Castle, DE

- 20,800 square feet of clean, well-lit, flexible warehouse space
- Close proximity to interchanges of almost ALL major highways in DE
- Brick, block, and steel construction
- Two standard dock doors and ample parking in front and rear of building
- Clean office fit-out in front of warehouse

• [Click here to learn more about this space...](#)



### Former Crowning Glory | 1320 N. Union Street, Wilmington, DE

- Stand-alone building in the heart of Wilmington with a 13 space parking lot
- +/- 2,800 SF of Retail/Office/Residential
- Newly Refinished throughout; carpets, bathrooms, kitchen—CLEAN
- Minutes to interchange of I-95 and Delaware Ave, one block off Rt. 52
- Currently fit-out as salon, but perfectly configured for an office
- A few hundred feet from Happy Harry's, Winner Audi, and Shell Station

• [Click here to learn more about this space...](#)



### Riveredge Park | 551 Mews Drive, New Castle, DE

- 19,275 square feet of beautiful office space
- Close proximity to interchanges of almost ALL major highways in DE
- Preconfigured with executive offices and conference rooms
- Open spacious floor-plan with multiple sections allowing for cubicle layout
- Secluded but accessible location on one floor near the Delaware River
- Surrounding neighbors include The MI Group, TA Instruments, Diamond Technologies and Pencader Business Charter High School

• [Click here to learn more about this space...](#)



### Tri-State Business Center | 130 Hickman Road, Claymont, DE

- Units from 1,700 square feet of clean, flexible warehouse/retail space
- Close proximity to interchanges of I-95, I-495, and Naamans Rd
- Brick, block, and steel construction
- Units with dock, drive-in, or store-front doors and ample parking
- Units up to 8,400 square feet

• [Click here to learn more about this space...](#)



### Riveredge Park | 37 Lukens Drive, New Castle, DE

- +/- 16,000 SF of flexible warehouse with clean office fit-out
- Close proximity to interchanges of I-95, I-495, and I-295
- Brick, block, and steel construction
- Two dock doors and one drive-in door; ample parking
- Units up to 8,750 square feet

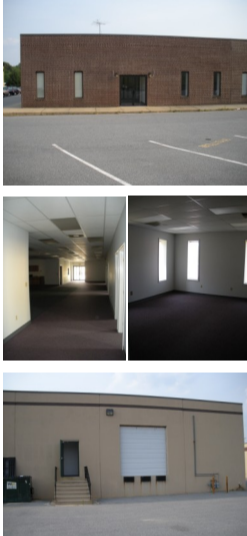
• [Click here to learn more about this space...](#)



### Churchman's Center | 910 New Churchman's Rd Ext, New Castle, DE

- 7,265 SF of BUILD TO SUIT "shell" building
- Custom build this ideal space to suit your business needs
- Stand-alone building with ample parking available immediately
- Large tinted-glass windows on all sides of the building
- Contractors available to custom-fit building

• [Click here to learn more about this space...](#)



### Churchman's Center | 63 Christiana Road (273), New Castle, DE

- 5,000 SF of flexible office/retail/flex space
- Currently configured w/ open floor area, 12 offices, & two conference rooms
- Great visibility from DE Route 273 (Christiana Road)
- Existing dock door available (currently covered by drywall)
- Space for signage on 273 (Christiana Road)

• [Click here to learn more about this space...](#)



### Riveredge Park | 101 Lukens Drive, Suite H, New Castle, DE

- 12,918 SF of flexible warehouse space
- Close proximity to interchanges of almost ALL major highways in DE
- Drive-in door and standard dock door with ample "turnaround" space behind building
- 24' ceiling height, open floor-plan, small office fit-out in front of building, and sunroofs for great natural light

• [Click here to learn more about this space...](#)



### Riveredge Park | 101 Lukens Drive, Suite I, New Castle, DE

- 11,689 SF of flexible warehouse space
- Close proximity to interchanges of almost ALL major highways in DE
- Standard dock door with ample "turnaround" space behind building
- 24' ceiling height, open floor-plan, small office fit-out in front of building, and sunroofs for great natural light

• [Click here to learn more about this space...](#)



### Former Benz Hydraulics | 157 S. DuPont Highway, New Castle, DE

- Stand alone building: 4,900 SF of retail, office, and warehouse space
- 3,600 SF of retail/warehouse and 1,300 SF of very clean office
- Route 13, just south of New Castle County Airport
- Great visibility to approximately 80,000 cars per day
- Parking lot for 20 cars and easy ingress and egress

• [Click here to learn more about this space...](#)



### Churchman's Center | 97 Christiana Road (273), New Castle, DE

- 10,000 square feet of flexible office/warehouse space
- Three drive-in doors in rear of building
- Brick, block, and steel construction
- Close proximity to interchanges of almost ALL major highways in DE
- Ample parking in front side, and rear of building

• [Click here to learn more about this space...](#)



### Churchman's Center | 26 Parkway Circle, New Castle, DE

- 3,000 SF flex warehouse space
- Three 10' x 10' drive-in doors
- Brick, block, and steel construction
- Close proximity to interchanges of almost ALL major highways in DE
- Ample parking

• [Click here to learn more about this space...](#)



Visit or contact White Realty Associates at...

### White Realty Associates

3704 Kennett Pike, Suite 200

The Greenville Professional Center

Greenville, DE 19807

(302) 658-6681

To remove your name from our mailing list, please [click here](#).

Questions or comments? E-mail us at [jshahan@whiterealtyassociates.com](mailto:jshahan@whiterealtyassociates.com) or call 302.658.6681 x 210